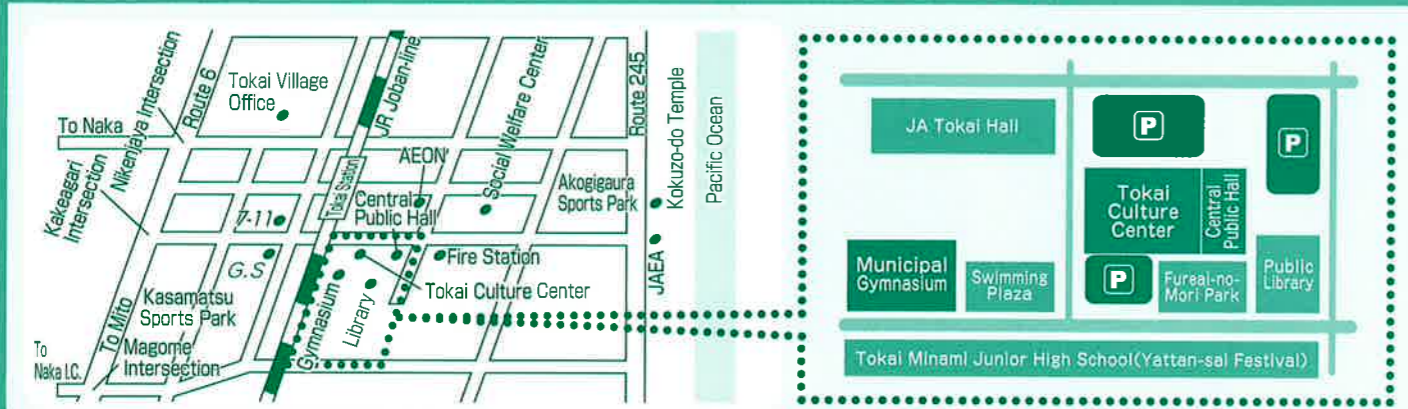


## Area/Site Guide Map



### Activity Corner (at the Gymnasium)

#### ORIZOME(Folding Dye) & Small Decorative Box

**11/3**  
Sat. Holiday  
10:30~11:30  
13:00~14:00  
※10 people AM/PM  
(first come, first served basis).



Instructors: Mito Tomo-no-Kai

Fold Japanese paper, dip in dye.  
Overlapping colors produce beautiful patterns.  
Paste the paper on the milk carton box to complete your one and only original design.

#### Let's use paper clay And make a funny Branch Man

**11/4**  
(Sun.)  
10:30~12:00  
13:30~15:00  
※10 people AM/PM  
(first come, first served basis).



Instructor: Sculptor KITAZAWA Tsutomu

Attach face, hands and legs made from paper clay to the various branches.  
Make your own original Branch Man.  
It's great fun to make things

### Notice

Visit areas marked with ★ to try different crafts and activities!  
(Space is limited.)



## Tokai-mura Cultural Festival 2018 Participating Groups (random order)

- Tokai Art Association
- Tokai-mura Calligraphy Association
- Tokai-mura Photograph Association
- Tokai-mura Arts and Crafts Association
- Tokai-mura Bonsai Association
- Tokai-mura Flower Arrangement Association
- Tokai-mura Chrysanthemum Association
- Tokai-mura Wild Plants Association
- Tokai-mura Painting in Sumi Association
- Tokai-mura Amateur Radio Association
- Tokai-mura Tea Ceremony Association
- Federation of Tokai-mura Senior Citizens Clubs
- baraki Pref. Architects and Builders Group Inc. Tokai Region, Hitachinaka Branch
- Group for Protecting Tokai-mura Cultural Assets and Nature
- Tokai-mura Elementary/Junior High Schools
- Sukashiyuri (Elegant Lily) Ikebana Class for children
- Ikebana Class for children
- NPO Matsubokkuri(Pinecone)
- Enjoy Pottery Group
- Friday Club
- Tokai-mura Entertainment Association
- Tokai-mura Karaoke Association
- Tokai-mura Japanese Dance Association
- Tokai-mura Jazz Dance Association
- Tokai-mura Hula Dancing Association
- Tokai-mura Modern Dance Association
- Tokai-mura Music Association
- Enjoy Harmonica Group
- Little Campanella
- Kin-ei-kai
- FAM
- TOKAI Ballet Club
- Tokai Drum Conservation Society
- Folk Dance Polaris
- Rhythm & Rhythmic Gymnastics Club
- Tokai-mura Nohgaku-kai
- Tokai-mura Go Association
- Tokai-mura Shogi Association
- Yosakoi Soran Association
- Tokai-mura Archery Association
- SC Smile TOKAI
- Tampopo(dandelion)-no-kai
- Folktale Regeneration Group
- TJS Tokai-mura Japanese Language Supporting Group
- Tokai 2(ni)-8(hachi) Soba-no-kai
- Tokai-mura Association of Commerce and Industry
- Voluntary Farmers Tokai-mura Agricultural Support Center
- Tokai-mura Silver Human Resources Center
- Lifelong Education Section, Tokai-mura Board of Education
- National Sports Festival/Sports Promotion Section, Tokai-mura Board of Education

## Farmer's Market

Fresh vegetables for sale (produced by voluntary farmers in Tokai-mura).  
Supplies are limited, so come early!

**Date : One day only Nov. 3 (Sat. Holiday)**  
**Time of Sale : from 9:00 until the stock runs out**  
**Place : Outdoor Stage Area, Tokai-mura Municipal Gymnasium**



## (at the same time) 35th Tokai Yattan-sai Festival

**Date and Time: Nov. 4(Sun) 10:00~15:00**  
**Place: Tokai Minami Junior High School (School Ground and School Gymnasium)**

This festival will be held by the Youth Affairs Group. You can take part in games at the "Challenge Area". You can enjoy various refreshments at the "Bazaar Area".  
Please enjoy and let's have fun!

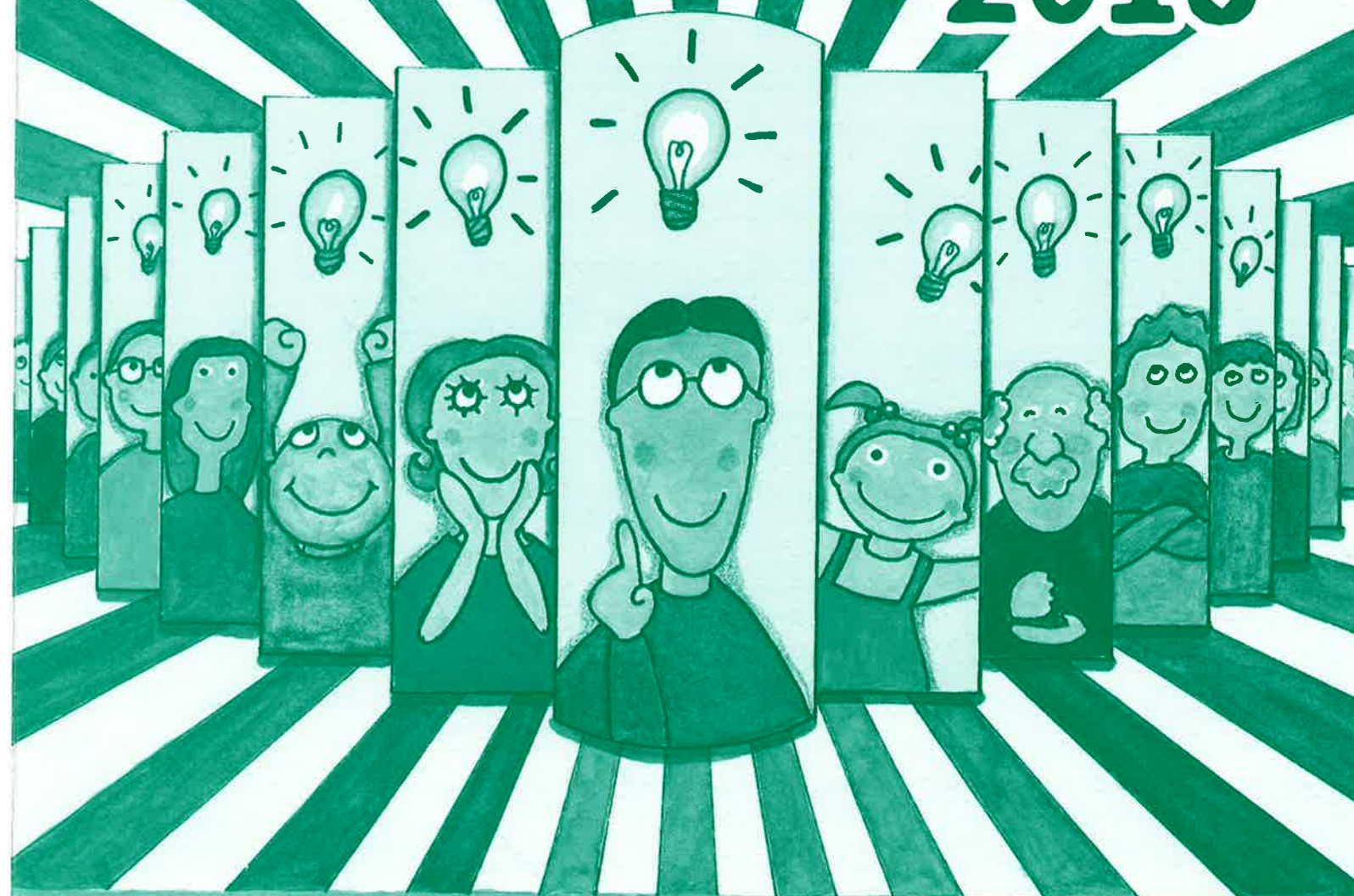


**Tokai Yattan-sai Festival Executive Committee Office (in the Youth Center) TEL 029-282-7049**

# Tokai-mura

# Cultural Festival

# 2018



**<Date> Oct. 26, 2018(Fri.) Music Festival Performed by Elementary and Junior High Schools**

**Oct. 28(Sun.), Nov. 2(Fri.)~Nov. 4(Sun.)**

**<Place> Tokai-mura Municipal Gymnasium Tokai Culture Center Tokai-mura Library**

**Organized by Tokai-mura Cultural Festival Executive Committee Jointly with Tokai Board of Education**  
**Sponsored by Tokai-mura Cultural Association**

**<Inquiry> Tokai-mura Cultural Festival Executive Committee Office (in Tokai Culture Center) Tel: 029-282-8511**

**Free Admission**

Tokai-mura Cultural Festival Celebrating 46 years

# Entertainment Guide

## Culture Center (Bunka Center) ※Times are approximate.

	Date	Time	Contents (Group Name)
Stage Performance	10/26(Fri.)	9:50~15:10	Elementary/Junior High Schools Music Performance (Music Education Research Department, Tokai-mura Institute of Education)
	10/28(Sun.)	10:00~11:40	Music Concert ~Chorus·Harmonica·Ocarina~ (Music Association, Enjoy Harmonica Group)
		12:50~13:50	Taisho-goto Concert (Kin-ei-kai)
		14:00~18:00	Karaoke (Karaoke Association)
	11/3(Sat. Holiday)	10:00~10:30	Japanese Drum Concert (Tokai Drum Conservation Society)
		Intermission	(Traditional Performance Art) Nankin-Tamasudare
		10:45~11:45	Noh Song & Dance (Tokai-mura Noh-gaku-kai)
		12:40~13:10	Folk Dance (Polaris)
		13:15~14:15	Classical Japanese Dance (Japanese Dance Association)
		Intermission	(Traditional Performance Art) Nankin-Tamasudare
		14:25~16:25	Entertainment -Tsugaru-shamisen·Singing poem/sword/poetry dance· Japanese folk songs - (Entertainment Association)
		11/4(Sun.)	10:00~11:10
	11:20~11:50		Classical Ballet (TOKAI Ballet Club)
	12:40~13:10		Jazz Dance (Jazz Dance Association)
	13:15~13:35		Kids'Dance (FAM)
	13:40~15:10		Hula (Hula Dancing Association)
	15:15~15:55		Rhythmic Gymnastics (Rhythm & Rhythmic Gymnastics Club)
	16:15~17:00		Modern Ballet (Modern Dance Association)
	10/28(Sun.)	13:30~15:30	Messages in Japanese by Foreigners (Tokai-mura Japanese Supporting Group)
Conference Room (2nd Floor)	11/3(Sat. Holiday)	9:00~17:00	* Go Championship (Go Association) * Shogi Tournament (Shogi Association)
		9:45~15:00	◎Jr. Shogi Tournament (Shogi Association)

\* Those interested in participating in the tournaments, please register at the Central Public Hall at 9:00. Award ceremony will be held after the tournament at the same place.

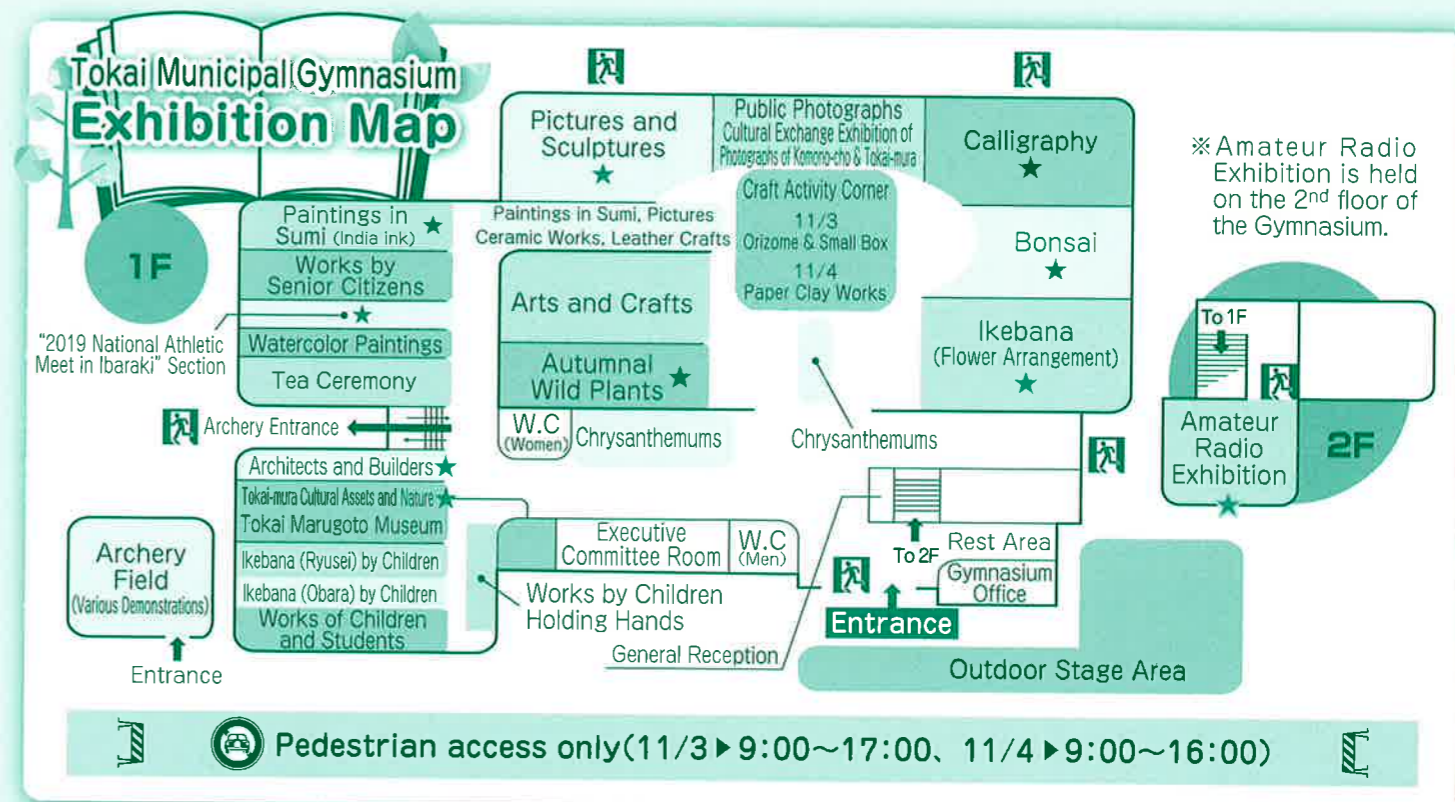
◎Those interested in participating in the Junior Shogi Tournament, please register in advance.

## Library

Date	Time	Contents (Group Name)
11/3(Sat. Holiday)	10:30~11:30	Story-telling (Tampopo(dandelion)-no-kai)
	14:00~15:00	
11/4(Sun.)	11:00~11:30	Tokai-mura Folktale~Performance and Exhibition of storytelling through pictures~ (Folktale Regeneration Group)
	14:00~14:30	

## Outdoor Stage Area

	Date	Time	Contents (Group Name)
Stage Performance	11/4(Sun.)	10:30~11:00	Hula (Hula Dancing Association)
		11:00~12:00	Kids'Dance (SC Smile TOKAI)
		12:00~13:00	Yosakoi-Soran Dance (Yosakoi Soran Association)
Bazaar	11/2(Fri.)~11/4(Sun.)	9:00~15:00	Wild Plants (Wild Plants Association)
	11/2(Fri.)~11/3(Sat. Holiday)	9:00~16:00	Bonsai (Bonsai Association)
	11/3(Sat. Holiday)	10:00~15:00	Pottery, Leather Goods, Wood Carvings, Hand-knitted Products, Remade Cloth Goods (Arts and Crafts Association)
Farmer's Market	11/3(Sat. Holiday)	9:00~	Farmer's Market (Voluntary Farmers/Agricultural Support Center)
		until the stock runs out	
Refreshments Area	11/2(Fri.)~11/4(Sun.) ※ There might be some changes	11:00~15:00	Sale of Lunch Box(O-bento)/Snacks, etc. (Tokai-mura Association of Commerce & Industry)
			Demonstration/Soba Sale (Tokai 2(ni)-8(hachi) Soba-no-kai)



## Municipal Gymnasium (★ Mini craft activity. Drop by and try!)

	Date/Time	Contents (Group Name)	
Exhibition	11/2(Fri.)~11/4(Sun.) 9:00~17:00  11/4 Close at 16:00 (Admittance till 15:30)	Chrysanthemum (Chrysanthemum Association)	
		Ikebana (Flower Arrangement Association) ★	
		Autumnal Wild Plants (Wild Plants Association) ★	
		Bonsai (Bonsai Association) ★	
		Arts and Crafts ~ Ceramic Works, Leather Crafts, Wood Carvings, Hand-knitted Products, Dressmaking (Bunka-style) (Arts and Crafts Association)	
		Calligraphy (Calligraphy Association) ★	
		Public Photographs (Photograph Association) ※ <b>Special Event</b> "Cultural Exchange Exhibition of Photographs of Komono-cho and Tokai-mura"	
		Pictures and Sculptures (Art Association) ★	
		Ceramic Works (Enjoy Pottery Group)	
		Leather Crafts (Friday Club)	
		Paintings in Sumi (India-ink) (Painting in Sumi Association) ★	
		Works by Senior Citizens (Federation of Tokai-mura Senior Citizens Clubs)	
		"Ikiiki Ibaraki "Yume" National Athletic Meet 2019" Section (National Sports Festival/Sports Promotion Section, Tokai-mura Board of Education) ★	
		Watercolor Paintings (NPO Matsubokkuri (Pinecone))	
		Architects and Builders (Ibaraki Pref. Architects and Builders Group Inc.) ★	
		Tokai-mura Cultural Assets and Nature (Protecting Tokai-mura Cultural Assets and Nature Group)	
		Tokai-mura Marugoto Museum (Lifelong Education Section, Tokai-mura Board of Education)	
Ikebana (Ryusei) by Children (SUKASHIYURI (Elegant Lily) Ikebana class for children)			
Ikebana (Obara) by Children (Ikebana class for children)			
Works of Children and Students (Tokai-mura Elementary/Junior High Schools)			
Children and Students ~ Works by Children Holding Hands ~ (Special Support Education Department, Tokai-mura Institute of Education)			
Amateur Radio (Amateur Radio League) ★			
Tea Ceremony	11/3(Sat. Holiday)	10:00~15:00	Tea Ceremony (usu-cha) (Tea Ceremony League, Omote Senke, Chisoku-kai Sone-shachu)
	11/4(Sun.)	10:00~15:00	Tea Ceremony (usu-cha) (Tea Ceremony League, Omote Senke, Shingetsu-kai Hara-shachu)

※Award Ceremony will be held at the Exhibition Hall at 15:00, 11/4(Sun.).

Archery Field	Date	Time	Contents (Group Name)
	11/3 (Sat. Holiday)	9:30~11:30	Various Demonstrations of Archery (Archery Association)
		13:00~15:00	